



## MEETING MINUTES

### Helms Elementary School Construction Progress Meeting # 4

Date	Time	Purpose	Location
April 18, 2012	9:30am	Weekly Update	Helms ES, T Building
Prepared By – Tim Beally			
See Attached Attendee List			

#### 1) CMPA/Owner Issues

- a) Marquee Conduit – AECOM queried the sign manufacturer, Atlas Signs. They need a 2" conduit for the fiber optic line. AECOM relayed via email earlier this week.
- b) Unit Ventilators – The previous week HIG said the delivery date for the unit ventilators is seven weeks from 04/12/12 – about the end of May 2012.
- c) Moving
  - i) Work to be done in the classrooms will be limited to areas necessary to install the unit ventilators and replace light fixtures. Furniture can be moved away from the unit ventilators to provide access. Furniture and equipment which needs to be moved out of work areas can be re-located into the cafeteria.
  - ii) Teachers need to remove personal items before the summer break and consolidate items. AECOM discussed with the Principal about the possibility of supporting some move of equipment and furniture into the cafeteria. AECOM was getting quotes from movers to provide moving service.
  - iii) Ms. Murillo in the office is responsible to inventory textbooks after the end of the school year. She asked if she could stay in the building until 06/08/12. That seems workable.
  - iv) HIG suggested that the school might be able to use existing T buildings to support staff during the summer. AECOM would mention to the school.
- d) Power Outages
  - i) AECOM asked HIG to give notice of desired power outage at least 10 days in advance.
  - ii) Most of the outages will be local, will not affect the entire site and should be brief.

#### 2) Architect / Consultants

- a) FGC issued a number of Work Change Proposal Request (AIA G709-2001). See Changes below.

#### 3) Contractor

- a) Outside Air Handling Units (OAHUs) Clearance from Building – HIG does not yet have approved OAHUs so they do not know the size of the approved unit nor the size of the concrete pad.
- b) HIG fired their electrical sub-contractor Loggins Construction for non-responsiveness. They are looking at two firms to replace them.
- c) Wes Geyer said he is moving to Florida for personal reasons. He is discussing with HIG if he will stay with the company.
- d) Existing white boards.
  - i) The superintendent said every classroom has existing whiteboards ("showerboards") which will require removal prior to placement of the new whiteboards.
  - ii) FGC said there is a note saying these need to be removed.
  - iii) AECOM asked HIG to confirm.

#### 4) HAZMAT

- a) No report or activity

#### 5) Safety

- a) Site access – the school opened the access to the Spark Park after hours. This should not affect the construction activity.

**6) Schedule**

- a) See attached schedule
- b) Two week look ahead is attached. Work consists of mainly exterior site work and preparing for the pads to support the OAHUs.
- c) Work in Classroom 6
  - i) The work will take four to six weeks, including curing time. The current plan is to start at the end of April
  - ii) The class has been relocated. The instructor is packed up and moved out.
- d) STAAR testing was underway and would continue until 04/29/12.

**7) Change Proposals Request (CPRs) and Change Orders**

- a) See CPR log (attached).
- b) FG issued an ASI for CPR 3 – Revise ADA Parking.
- c) FGC issued ASIs for CPRs 1, 3, 5, 8, 9, 10
- d) Two of the CPRs had to be renumbered. The attached CPR log shows the correct numbering of all the CPRs.

**8) Submittals**

- a) The submittal log is attached.
- b) HIG has submitted forty eight products. Last week forty two items had been submitted.
- c) Discussion on specific items:
  - i) FGC resent the response on the geoform submittal.
  - ii) JE said the fan coil units submittal needs to be re-submitted.
  - iii) HIG provide an advance copy to JE of the outside air handling unit.
  - iv) Submissions of the public address, fire alarm systems and duct work are being prepared.
  - v) AECOM asked HIG to coordinate with JE concerning location of panels for the HVAC controls.

**9) Requests for Information (RFIs)**

- a) The RFI log is attached.
- b) FGC answered RFI 1 and 2 this past week.
- c) HIG just issued RFI 3

**10) Record Drawing Review**

- a) FGC says the revised drawings are at COH for re-permitting. COH had some questions to which FGC has responded. The permit number is 12 033 933.

**11) Pay Application**

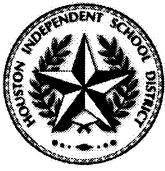
- a) HIG submitted an updated draft schedule of values. It shows breakout of all the work areas except for electrical. They will provide that shortly.

**12) Site Observations**

- a) No physical work yet

**Next Meeting – Wednesday, May 2, 2012 at 9:30 AM**

These minutes were prepared to accurately report the discussions, issues and decisions made at the above referenced meeting. If any attendee does not agree with the statements made above, please provide corrections in writing within three (3) days of receipt; otherwise, it is deemed all meeting participants are in agreement with the contents.



HOUSTON INDEPENDENT SCHOOL DISTRICT  
Construction Services (Bond Program)  
3500 Tampa Street • Houston, Texas 77021-1244

**AECOM**

**SIGN-IN SHEET  
HISD BOND PROGRAM**

**Project:** Helms Elementary School Renovation

**Meeting Date / Time:**

April 25, 2012, 9:30 AM

**Meeting Purpose:** Construction Meeting 4

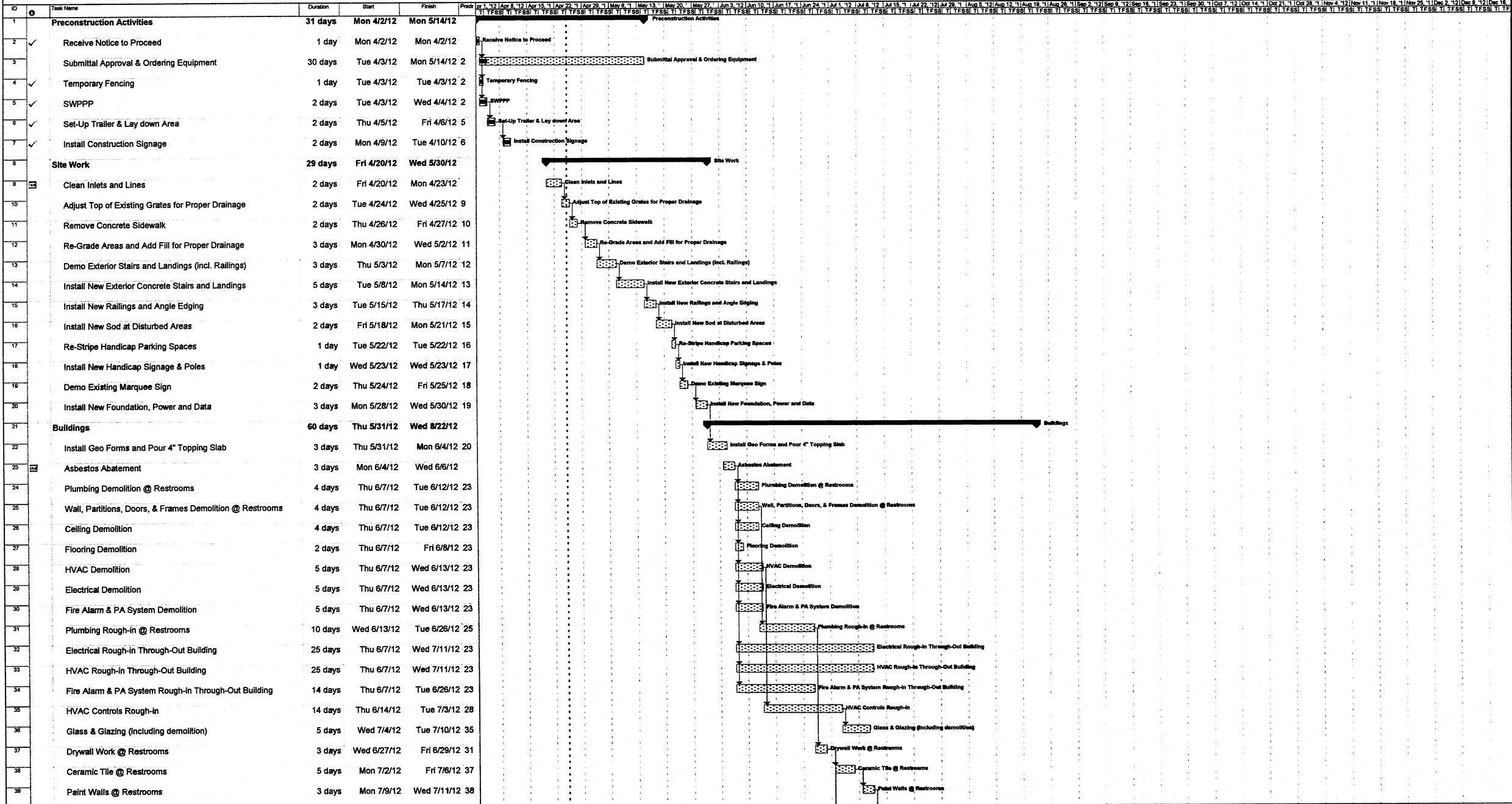
**Location:** Helms ES

Name	Initial	Title	Company	Phone	Email Address
Tim Beally	<i>TMB</i>	PM	AECOM	713-267-3223	Tim.beally@aecom.com
Diana Del Pilar	<i>DDP</i>	Principal	HISD – Helms ES	713-867-5130	ddelpila@houstonisd.org
Brian Cox	<i>BM C</i>	Principal	Fehr Grossman Cox	713.797.0404	bcox@fgca.cc
Ron Hughes	<i>RH</i>	Project Manager	Jones Engineers	713-222-7766	rhuhges@jonesengineers.com
Wes Geyer	<i>WG</i>	Project Manager	Horizon Intl. Group	832-347-7204	wgeyer@hgiusa.com
Russell McCown	<i>RAM</i>	Project Manager	Horizon Intl. Group	832-752-0066	rmccown@hgiusa.com
Gary McMaster	<i>GM</i>	Superintendent	Horizon Intl. Group	281-413-8112	gmcmaster@hgiusa.com
Mike Afshar	<i>MA</i>	PM	ERC	713-290-9444	mafshar@erc-tx.com

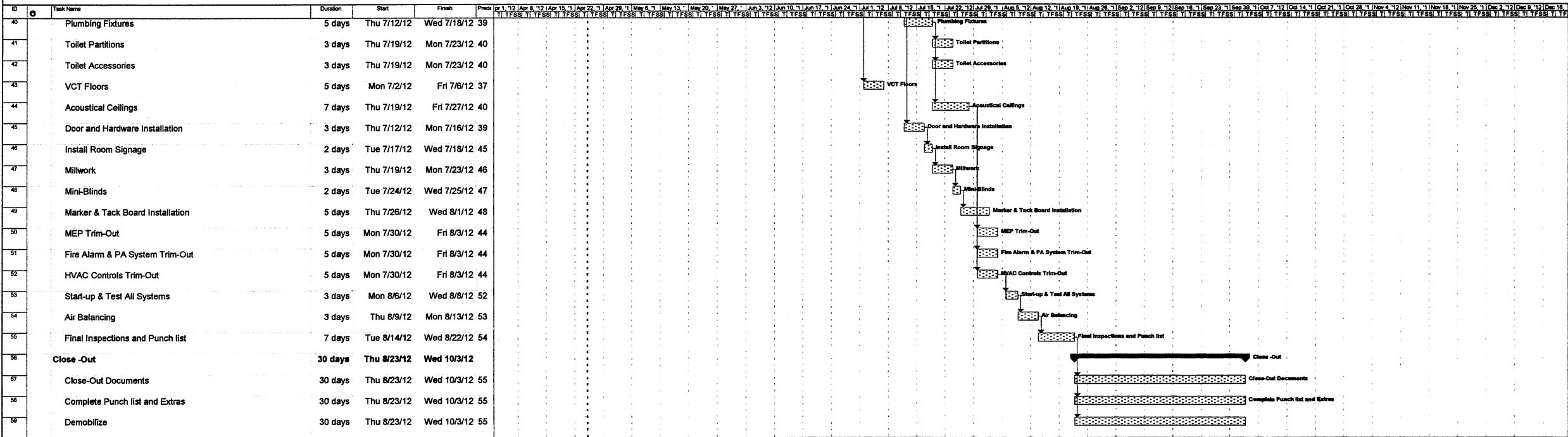
1 DUSTON TEXAS 77008

4/25/2012

Helms Elementary School



Helms Elementary School



# HORIZON INTERNATIONAL GROUP, LLC

## HISD HELMS ELEMENTARY SCHOOL RENOVATION

### SCHEDULE OF VALUES

Draft

A	B	C	D	E	F	G		H	I
ITEM NO.	DESCRIPTION OF WORK	SCHEDULED VALUE	WORK COMPLETED		Materials Presently Stored	Total Completed and Stored to Date	%	Balance To Complete	Retainage
			From Previous Applications	This Period					
1	<b>DIV. 1 - GENERAL CONDITIONS</b>								
2	OH&P	\$119,705.00	\$0.00		\$0.00	\$0.00	0.00%	\$119,705.00	\$0.00
3	Payment/Performance Bond	\$30,824.00	\$0.00		\$0.00	\$0.00	0.00%	\$30,824.00	\$0.00
4	Builders Risk	\$20,000.00	\$0.00		\$0.00	\$0.00	0.00%	\$20,000.00	\$0.00
5	Project Management	\$22,765.00	\$0.00		\$0.00	\$0.00	0.00%	\$22,765.00	\$0.00
6	Supervision	\$50,712.00	\$0.00		\$0.00	\$0.00	0.00%	\$50,712.00	\$0.00
7	Office Trailer	\$4,286.00	\$0.00		\$0.00	\$0.00	0.00%	\$4,286.00	\$0.00
8	Dumpsters	\$3,628.00	\$0.00		\$0.00	\$0.00	0.00%	\$3,628.00	\$0.00
9	Barricades	\$1,500.00	\$0.00		\$0.00	\$0.00	0.00%	\$1,500.00	\$0.00
10	Sanitary Facilities	\$857.00	\$0.00		\$0.00	\$0.00	0.00%	\$857.00	\$0.00
11	General Labor	\$10,500.00	\$0.00		\$0.00	\$0.00	0.00%	\$10,500.00	\$0.00
12	Equipment & Material Handling	\$2,000.00	\$0.00		\$0.00	\$0.00	0.00%	\$2,000.00	\$0.00
13	Travel	\$2,857.00	\$0.00		\$0.00	\$0.00	0.00%	\$2,857.00	\$0.00
14	Job Phone	\$1,714.00	\$0.00		\$0.00	\$0.00	0.00%	\$1,714.00	\$0.00
15	Job Utilities	\$0.00	\$0.00		\$0.00	\$0.00	0.00%	\$0.00	\$0.00
16	Equipment Rental	\$3,628.00	\$0.00		\$0.00	\$0.00	0.00%	\$3,628.00	\$0.00
17	Job Sign	\$0.00	\$0.00		\$0.00	\$0.00	0.00%	\$0.00	\$0.00
18	Temporary Fencing & Security	\$500.00	\$0.00		\$0.00	\$0.00	0.00%	\$500.00	\$0.00
19	Storage Container	\$0.00	\$0.00		\$0.00	\$0.00	0.00%	\$0.00	\$0.00
20	General Clean-Up	\$0.00	\$0.00		\$0.00	\$0.00	0.00%	\$0.00	\$0.00
21	Final Clean - Sub	\$6,710.00	\$0.00		\$0.00	\$0.00	0.00%	\$6,710.00	\$0.00
22	Punch Out	\$0.00	\$0.00		\$0.00	\$0.00	0.00%	\$0.00	\$0.00
23	Close Out	\$0.00	\$0.00		\$0.00	\$0.00	0.00%	\$0.00	\$0.00
24	Layout & Surveying	\$0.00	\$0.00		\$0.00	\$0.00	0.00%	\$0.00	\$0.00
25	Office Admin	\$4,286.00	\$0.00		\$0.00	\$0.00	0.00%	\$4,286.00	\$0.00
26	SWPPP	\$0.00	\$0.00		\$0.00	\$0.00	0.00%	\$0.00	\$0.00
27	Permits	\$4,488.00	\$0.00		\$0.00	\$0.00	0.00%	\$4,488.00	\$0.00
28	<b>ALLOWANCES</b>								
29	HISD Allowance	\$10,000.00	\$0.00		\$0.00	\$0.00	0.00%	\$10,000.00	\$0.00
30	<b>DIV. 2 - Site Work</b>								
31	Landscaping/Site work	\$10,167.00	\$0.00		\$0.00	\$0.00	0.00%	\$10,167.00	\$0.00
32	Asbestos Abatement	\$11,200.00	\$0.00		\$0.00	\$0.00	0.00%	\$11,200.00	\$0.00
33	Demolition	\$13,675.00	\$0.00		\$0.00	\$0.00	0.00%	\$13,675.00	\$0.00
34		\$0.00	\$0.00		\$0.00	\$0.00	0.00%	\$0.00	\$0.00
35	Pavement Marking	\$2,160.00	\$0.00		\$0.00	\$0.00	0.00%	\$2,160.00	\$0.00
36	Fencing	\$6,200.00	\$0.00		\$0.00	\$0.00	0.00%	\$6,200.00	4 \$0.00

37	DIV. 3 - CONCRETE								
38	Cast-in-Place Concrete - Materials	\$10,300.00	\$0.00		\$0.00	\$0.00	0.00%	\$10,300.00	\$0.00
39	Cast-in-Place Concrete - Labor	\$7,000.00	\$0.00		\$0.00	\$0.00	0.00%	\$7,000.00	\$0.00
40			\$0.00		\$0.00	\$0.00	0.00%	\$0.00	\$0.00
41	DIV. 5 - STRUCTURAL								
42	Pipe & Tube Railings - Mat	\$20,000.00	\$0.00		\$0.00	\$0.00	0.00%	\$20,000.00	\$0.00
43	Pipe & Tube Railings - Lab	\$5,450.00	\$0.00		\$0.00	\$0.00	0.00%	\$5,450.00	\$0.00
44			\$0.00		\$0.00	\$0.00	0.00%	\$0.00	\$0.00
45	DIV. 6 - WOODS AND PLASTICS								
46	Rough Carpentry M	\$4,000.00	\$0.00		\$0.00	\$0.00	0.00%	\$4,000.00	\$0.00
47	Rough Carpentry L	\$2,500.00	\$0.00		\$0.00	\$0.00	0.00%	\$2,500.00	\$0.00
48	Millwork/Trim - M	\$12,000.00	\$0.00		\$0.00	\$0.00	0.00%	\$12,000.00	\$0.00
49	Millwork/Trim - L	\$8,000.00	\$0.00		\$0.00	\$0.00	0.00%	\$8,000.00	\$0.00
50			\$0.00		\$0.00	\$0.00	0.00%	\$0.00	\$0.00
51	DIV. 7 - THERMAL & MOISTURE								
52	Joint Sealants - M	\$20,000.00	\$0.00		\$0.00	\$0.00	0.00%	\$20,000.00	\$0.00
53	Joint Sealants - L	\$6,500.00	\$0.00		\$0.00	\$0.00	0.00%	\$6,500.00	\$0.00
54			\$0.00		\$0.00	\$0.00	0.00%	\$0.00	\$0.00
55	DIV. 8 - DOORS AND FRAMES								
56	Material Handling	\$893.00	\$0.00		\$0.00	\$0.00	0.00%	\$893.00	\$0.00
57	Steel Doors & Frames - M	\$62,100.00	\$0.00		\$0.00	\$0.00	0.00%	\$62,100.00	\$0.00
58	Install Door - L	\$4,500.00	\$0.00		\$0.00	\$0.00	0.00%	\$4,500.00	\$0.00
59	Window/Storefront - M	\$4,400.00	\$0.00		\$0.00	\$0.00	0.00%	\$4,400.00	\$0.00
60	Window/Storefront - L	\$1,899.00	\$0.00		\$0.00	\$0.00	0.00%	\$1,899.00	\$0.00
61	Hardware - M	\$0.00	\$0.00		\$0.00	\$0.00	0.00%	\$0.00	\$0.00
62	Install Hardware - L	\$4,525.00	\$0.00		\$0.00	\$0.00	0.00%	\$4,525.00	\$0.00
63			\$0.00		\$0.00	\$0.00	0.00%	\$0.00	\$0.00
64	DIV. 9 - FINISHES								
65	Portland Cement Plaster	\$0.00	\$0.00		\$0.00	\$0.00	0.00%	\$0.00	\$0.00
66	Metal Stud Framing - M	\$12,373.00	\$0.00		\$0.00	\$0.00	0.00%	\$12,373.00	\$0.00
67	Metal Stud Framing - L		\$0.00		\$0.00	\$0.00	0.00%	\$0.00	\$0.00
68	Drywall - M		\$0.00		\$0.00	\$0.00	0.00%	\$0.00	\$0.00
69	Drywall - L		\$0.00		\$0.00	\$0.00	0.00%	\$0.00	\$0.00
70	Ceramic Tile - Material	\$12,170.00	\$0.00		\$0.00	\$0.00	0.00%	\$12,170.00	\$0.00
71	Ceramic Tile - Labor	\$8,113.00	\$0.00		\$0.00	\$0.00	0.00%	\$8,113.00	\$0.00
72	Acoustical Ceilings - Material	\$8,076.00	\$0.00		\$0.00	\$0.00	0.00%	\$8,076.00	\$0.00
73	Acoustical Ceilings - Labor	\$5,384.00	\$0.00		\$0.00	\$0.00	0.00%	\$5,384.00	\$0.00
74	Painting - M	\$8,000.00	\$0.00		\$0.00	\$0.00	0.00%	\$8,000.00	\$0.00
75	Painting - L	\$12,000.00	\$0.00		\$0.00	\$0.00	0.00%	\$12,000.00	\$0.00
76	Resilient Flooring - M	\$11,115.00	\$0.00		\$0.00	\$0.00	0.00%	\$11,115.00	\$0.00
77	Resilient Flooring - L	\$0.00	\$0.00		\$0.00	\$0.00	0.00%	\$0.00	\$0.00
78	Rubber Base - M	\$0.00	\$0.00		\$0.00	\$0.00	0.00%	\$0.00	\$0.00
79	Rubber Base - L	\$0.00	\$0.00		\$0.00	\$0.00	0.00%	\$0.00	\$0.00
80	Floor Waxing	\$554.00	\$0.00		\$0.00	\$0.00	0.00%	\$554.00	\$0.00
81			\$0.00		\$0.00	\$0.00	0.00%	\$0.00	\$0.00



82	DIV. 10 - SPECIALTIES								
83	Toilet Compartments - M	\$15,138.00	\$0.00		\$0.00	\$0.00	0.00%	\$15,138.00	\$0.00
84	Toilet Compartments - L	\$6,487.00	\$0.00		\$0.00	\$0.00	0.00%	\$6,487.00	\$0.00
85	Signage - M	\$1,318.00	\$0.00		\$0.00	\$0.00	0.00%	\$1,318.00	\$0.00
86	Signage - L	\$500.00	\$0.00		\$0.00	\$0.00	0.00%	\$500.00	\$0.00
87	Fire Extinguishers/Cabinets - M	\$1,000.00	\$0.00		\$0.00	\$0.00	0.00%	\$1,000.00	\$0.00
88	Fire Extinguishers/Cabinets - L	\$450.00	\$0.00		\$0.00	\$0.00	0.00%	\$450.00	\$0.00
89	Toilet Accessories - M	\$0.00	\$0.00		\$0.00	\$0.00	0.00%	\$0.00	\$0.00
90	Toilet Accessories - L	\$0.00	\$0.00		\$0.00	\$0.00	0.00%	\$0.00	\$0.00
91	Marker/Tack Boards - M	\$12,929.00	\$0.00		\$0.00	\$0.00	0.00%	\$12,929.00	\$0.00
92	Marker/Tack Boards - L	\$0.00	\$0.00		\$0.00	\$0.00	0.00%	\$0.00	\$0.00
93			\$0.00		\$0.00	\$0.00	0.00%	\$0.00	\$0.00
94	DIV. 12 - FURNISHINGS								
95	Horizontal Window Blinds - M	\$673.00	\$0.00		\$0.00	\$0.00	0.00%	\$673.00	\$0.00
96	Horizontal Window Blinds - L	\$300.00	\$0.00		\$0.00	\$0.00	0.00%	\$300.00	\$0.00
97			\$0.00		\$0.00	\$0.00	0.00%	\$0.00	\$0.00
98	DIV. 22 - Plumbing								
99	Plumbing Rough In - M	\$14,625.00	\$0.00		\$0.00	\$0.00	0.00%	\$14,625.00	\$0.00
100	Plumbing Rough In - L	\$9,627.00	\$0.00		\$0.00	\$0.00	0.00%	\$9,627.00	\$0.00
101	Plumbing Insulation - M	\$3,771.00	\$0.00		\$0.00	\$0.00	0.00%	\$3,771.00	\$0.00
102	Plumbing Insulation - L	\$2,514.00	\$0.00		\$0.00	\$0.00	0.00%	\$2,514.00	\$0.00
103	Plumbing Fixtures - M	\$19,874.00	\$0.00		\$0.00	\$0.00	0.00%	\$19,874.00	\$0.00
104	Plumbing Fixtures - L	\$13,389.00	\$0.00		\$0.00	\$0.00	0.00%	\$13,389.00	\$0.00
105			\$0.00		\$0.00	\$0.00	0.00%	\$0.00	\$0.00
106	DIV. 23 - HVAC								
107	OAU's - M	\$120,517.00	\$0.00		\$0.00	\$0.00	0.00%	\$120,517.00	\$0.00
108	OAU'S - L	\$13,522.00	\$0.00		\$0.00	\$0.00	0.00%	\$13,522.00	\$0.00
109	Unit Ventilators, Fan coil Units - M	\$118,224.00	\$0.00		\$0.00	\$0.00	0.00%	\$118,224.00	\$0.00
110	Unit Ventilators, Fan coil Units - L	\$16,923.00	\$0.00		\$0.00	\$0.00	0.00%	\$16,923.00	\$0.00
111	Grilles, Registers, Boxes - M	\$9,489.00	\$0.00		\$0.00	\$0.00	0.00%	\$9,489.00	\$0.00
112	Grilles, Registers, Boxes - L	\$6,247.00	\$0.00		\$0.00	\$0.00	0.00%	\$6,247.00	\$0.00
113	Pipes, Valves Fitting for UV & FCU - M	\$47,104.00	\$0.00		\$0.00	\$0.00	0.00%	\$47,104.00	\$0.00
114	Pipes, Valves Fitting for UV & FCU - L	\$63,105.00	\$0.00		\$0.00	\$0.00	0.00%	\$63,105.00	\$0.00
115	Duct Fabrication,Installation - M	\$40,568.00	\$0.00		\$0.00	\$0.00	0.00%	\$40,568.00	\$0.00
116	Duct Fabrication,Installation - L	\$50,106.00	\$0.00		\$0.00	\$0.00	0.00%	\$50,106.00	\$0.00
117	Hangers & Supports - M	\$8,461.00	\$0.00		\$0.00	\$0.00	0.00%	\$8,461.00	\$0.00
118	Hangers & Supports - L	\$2,846.00	\$0.00		\$0.00	\$0.00	0.00%	\$2,846.00	\$0.00
119	Insulation - M	\$30,445.00	\$0.00		\$0.00	\$0.00	0.00%	\$30,445.00	\$0.00
120	Insulation - L	\$29,338.00	\$0.00		\$0.00	\$0.00	0.00%	\$29,338.00	\$0.00
121	Controls - M	\$112,600.00	\$0.00		\$0.00	\$0.00	0.00%	\$112,600.00	\$0.00
122	Controls - L	\$45,075.00	\$0.00		\$0.00	\$0.00	0.00%	\$45,075.00	\$0.00
123	Demolition - M	\$28,152.00	\$0.00		\$0.00	\$0.00	0.00%	\$28,152.00	\$0.00
124	Demolition - L	\$28,152.00	\$0.00		\$0.00	\$0.00	0.00%	\$28,152.00	\$0.00
125	Equipment Setting - M	\$5,693.00	\$0.00		\$0.00	\$0.00	0.00%	\$5,693.00	\$0.00
126	Equipment Setting - L	\$11,308.00	\$0.00		\$0.00	\$0.00	0.00%	\$11,308.00	\$0.00
127	Start Up/Commissioning - M	\$1,739.00	\$0.00		\$0.00	\$0.00	0.00%	\$1,739.00	\$0.00
128	Start Up/Commissioning - L	\$1,186.00	\$0.00		\$0.00	\$0.00	0.00%	\$1,186.00	\$0.00
129	Testing & Balancing	\$18,000.00	\$0.00		\$0.00	\$0.00	0.00%	\$18,000.00	4 \$0.00
130			\$0.00		\$0.00	\$0.00	0.00%	\$0.00	\$0.00

131	<b>DIV. 26 - ELECTRICAL</b>	<b>\$361,200.00</b>							
132	Mobilization		\$0.00		\$0.00	\$0.00	0.00%	\$0.00	\$0.00
133	Electrical Undergrounds - M		\$0.00		\$0.00	\$0.00	0.00%	\$0.00	\$0.00
134	Electrical Undergrounds - L		\$0.00		\$0.00	\$0.00	0.00%	\$0.00	\$0.00
135	Rough-In - M		\$0.00		\$0.00	\$0.00	0.00%	\$0.00	\$0.00
136	Rough-In - L		\$0.00		\$0.00	\$0.00	0.00%	\$0.00	\$0.00
137	Panels - Material		\$0.00		\$0.00	\$0.00	0.00%	\$0.00	\$0.00
138	Panels - Labor		\$0.00		\$0.00	\$0.00	0.00%	\$0.00	\$0.00
139	Lighting Fixture Package - Material		\$0.00		\$0.00	\$0.00	0.00%	\$0.00	\$0.00
140	Lighting Fixture Package - Labor		\$0.00		\$0.00	\$0.00	0.00%	\$0.00	\$0.00
141	Trim out - Materials		\$0.00		\$0.00	\$0.00	0.00%	\$0.00	\$0.00
142	Trim out - Labor		\$0.00		\$0.00	\$0.00	0.00%	\$0.00	\$0.00
143	Site work - Materials		\$0.00		\$0.00	\$0.00	0.00%	\$0.00	\$0.00
144	Site work - Labor		\$0.00		\$0.00	\$0.00	0.00%	\$0.00	\$0.00
145							0.00%		
146	<b>DIV. 27 - DSTRIBUTED COMMUNICATIONS</b>								
147	<b>AND MONITORING SYSTEM</b>								
148	PA System - M	\$30,716.00	\$0.00		\$0.00	\$0.00	0.00%	\$30,716.00	\$0.00
149	PA System - L	\$20,477.00	\$0.00		\$0.00	\$0.00	0.00%	\$20,477.00	\$0.00
150							0.00%		
151	<b>DIV. 28 - Fire Alarm</b>								
152	Fire Alarm - M	\$29,998.00	\$0.00		\$0.00	\$0.00	0.00%	\$29,998.00	\$0.00
153	Fire Alarm - L	\$20,000.00	\$0.00		\$0.00	\$0.00	0.00%	\$20,000.00	\$0.00
		<b>\$1,970,000.00</b>	<b>\$0.00</b>	<b>\$0.00</b>	<b>\$0.00</b>	<b>\$0.00</b>	<b>0%</b>	<b>\$1,608,800.00</b>	<b>\$0.00</b>

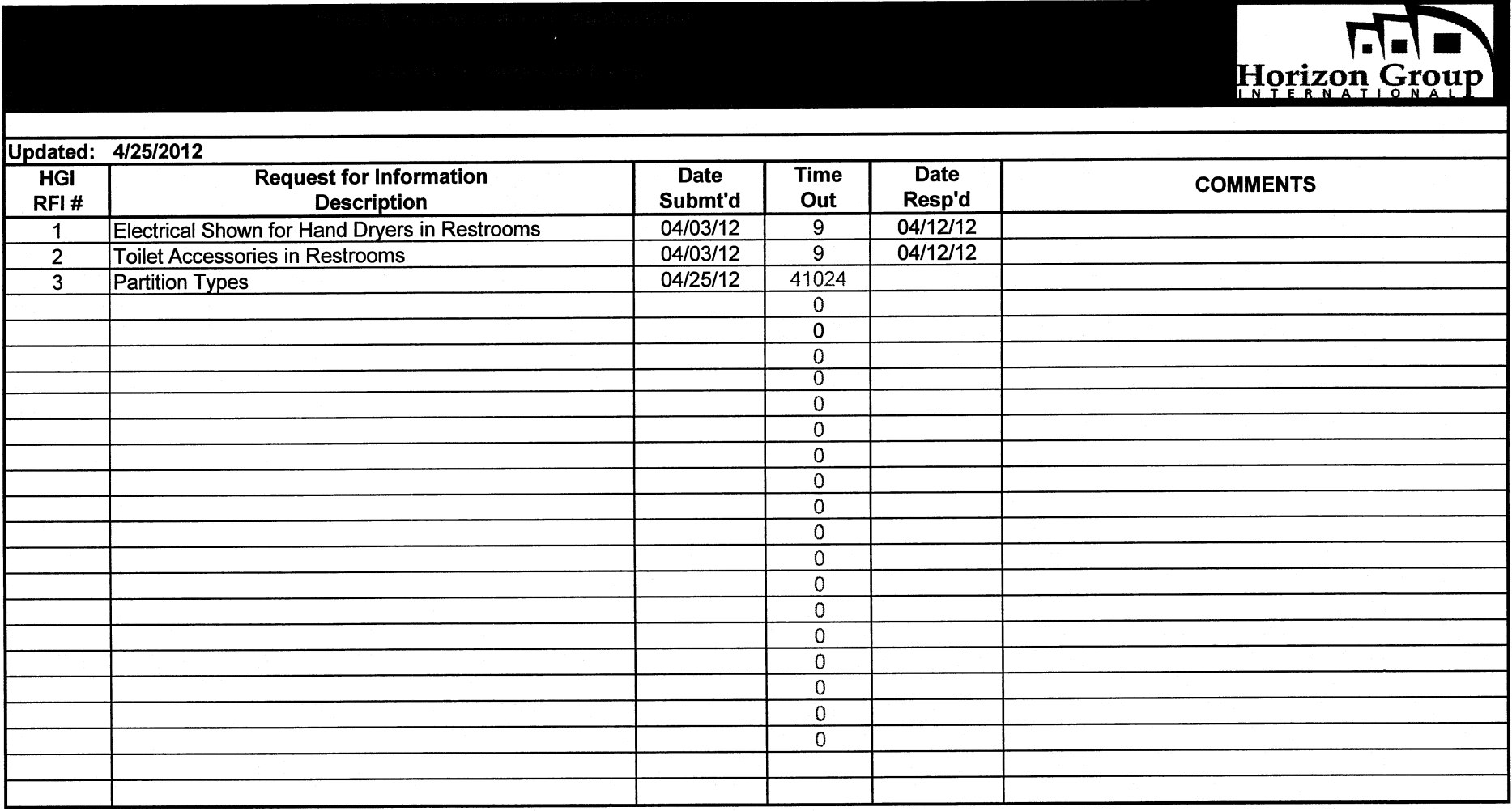
## Helms ES Renovation - Change Log

[illegible]

## Helms ES Renovation - Change Log

### CPRs on Hold, Cancelled or Done Through Alternative Means


[illegible]



Submittal Log and Schedule - Helms Elementary School



Submittal Log and Schedule - Helms Elementary School															
		Log of Required Submittals				Schedule		Submittal Distribution			Disposition of Submittal				
		Total Open Submittals													
		Total Submittals in HGI's Office													
Spec Section		Specification Subdivision	Status / Revision	Description	Subcontractor	Date HGI Requested	Date Due	Date Received	Date HGI Sent Out	Engineer / Architect	Date Returned to HGI	Date Returned to Subcontractor	Resubmittal Required	Notes	
													Y	N	
Division 02 Site Work															
024119 Selective Demolition															
		1.6C		Schedule of Demolition Activities											
		1.6D		Inventory of Demolition Items											
		1.6E		Predemolition Photographs											
029200 Lawns and Grasses															
		1.4A		Product Data											
029500 Fences & Gates															
		1.4A	Approved	Product Data & Shop Drawings	National Fence	04/09/12	04/09/12	04/09/12	04/10/12	Arch.	4/10/12	4/11/12	N		
Division 03 Concrete															
033000 Cast-In-Place-Concrete															
		1.2C		Design Mixes	Elite	03/30/12	03/30/12	04/02/12	04/02/12	Arch.					
		1.2D	As Noted	Reinforcement Shop Drawings	Elite	03/30/12	03/30/12	04/03/12	04/03/12	Arch.	4/5/12	4/6/12	N		
		1.2E		Expanded Polystyrene (EPS) Geofoam	Elite	04/03/12	04/03/12	04/03/12	04/03/12	Arch.	4/5/12	4/6/12	N		
Division 05 Metals															
055213 Pipe and Tube Railings															
		1.4A		Product Data	Gulf Coast										
		1.4B		Shop Drawings	Gulf Coast										
		1.5A		Paint Compatability	Gulf Coast										
Division 06 Wood and Plastics															
061053 Miscellaneous Rough Carpentry															
		1.4A		Product Data	Xtreme Const										
064023 Interior Architectural Woodwork															
		1.4A		Product Data	Xtreme Const										
		1.4C		Shop Drawings	Xtreme Const										
		1.4D		Samples	Xtreme Const										
		1.4E		Product Certificates	Xtreme Const										
Division 07 - Thermal And Moisture Protection															
079200 Joint Sealants															
		D.1		Product Data											
		D.2		Samples											
		D.4		Product Certificates											
Division 08 - Doors And Windows															
081113 Hollow Metal Doors and Frames															
		1.4A		Product Data	Xtreme Const										
		1.4B		Shop Drawings	Xtreme Const										
		1.4C		Samples	Xtreme Const										
082120 Solid Core Plastic Laminate Faced Doors															



Submittal Log and Schedule - Helms Elementary School



Submittal Log and Schedule - Helms Elementary School														
Spec Section		Log of Required Submittals				Schedule		Submittal Distribution			Disposition of Submittal			
		Total Open Submittals												
		Total Submittals in HGI's Office												
Spec Section		Specification Subdivision	Status / Revision	Description	Subcontractor	Date HGI Requested	Date Due	Date Received	Date HGI Sent Out	Engineer / Architect	Date Returned to HGI	Date Returned to Subcontractor	Resubmittal Required	Notes
		C.1		Product Data	Xtreme Const									
		C.2		Shop Drawings	Xtreme Const									
		C.3		Samples	Xtreme Const									
084113 Aluminum Storefront														
		D.1		Product Data	Mares Glass									
		D.2		Manufacturer Certification	Mares Glass									
		D.3		Shop Drawings	Mares Glass									
		D.4		Samples for Color Selection	Mares Glass									
		D.5		Samples for verification of Finishes	Mares Glass									
087100 Door Hardware														
		1.4A		Product Data	Xtreme Const									
		1.4B		Hardware Schedule	Xtreme Const									
		1.4C		Keying Information	?									
088000 Glazing														
		1.5A		Product Data	Mares Glass									
		1.5B		Samples of Glass	Mares Glass									
		1.5C		Samples of Gaskets	Mares Glass									
		1.5D		Manufacturer Certificate	Mares Glass									
		1.5F		Sealant Test Reports	Mares Glass									
Division 09 - Finishes														
092200 Portland Cement Plaster														
		1.3A		Product Data										
		1.3B		Shop Drawings										
		1.3C		Samples for Initial Selection										
		1.3D		Samples for Verification										
092210 Non-Structural Metal Framing														
		1.3A		Product Data	ABC Const.									
092900 Gypsum Board														
		1.3A		Product Data	ABC Const.									
		1.3B		Samples	ABC Const.									
093100 Ceramic Tile														
		1.5A		Product Data	Bus. Floor Sol,	03/30/12	03/30/12	04/02/12	04/02/12	Arch	4/17/12	4/18/12	Y	Submit Product Samples
		1.5C		Samples for Initial Selection	Bus. Floor Sol,									
		1.5D		Samples for Verification	Bus. Floor Sol,									
095113 Acoustical Panel Ceilings														
		1.5A		Product Data	ABC Const.									
		1.5C		Samples	ABC Const.									
096516 Resilient Sheet Flooring														
		1.3A		Product Data	Bus. Floor Sol,	03/30/12	03/30/12	04/02/12	04/02/12	Arch	4/17/12	4/18/12	Y	Submit Product Samples
		1.3C		Samples	Bus. Floor Sol,									
096519 Resilient Tile Flooring														
		1.3A		Product Data	Bus. Floor Sol,	03/30/12	03/30/12	04/02/12	04/02/12	Arch	4/17/12	4/18/12	Y	Submit Product Samples

Submittal Log and Schedule - Helms Elementary School



		Log of Required Submittals					Schedule	Submittal Distribution			Disposition of Submittal		
		Total Open Submittals											
		Total Submittals in HGI's Office											

Spec Section		Specification Subdivision	Status / Revision	Description	Subcontractor	Date HGI Requested	Date Due	Date Received	Date HGI Sent Out	Engineer / Architect	Date Returned to HGI	Date Returned to Subcontractor	Resubmittal Required
		1.3C		Samples	Bus. Floor Sol,								
096520 Resilient Base and Accessories													
		1.3a		Product Data	Bus. Floor Sol,								
		1.3B		Samples	Bus. Floor Sol,								
099113 Exterior Painting													
		1.3A		Product Data									
		1.3B		Samples									
		1.3C		Product List									
99123 Interior Painting													
		1.3A		Product Data									
		1.3B		Samples									
		1.3C		Product List									
Division 10:Specialties													
101000 Marker boards and Tack boards													
		1.10	As Noted	Product Data	Newline	04/03/12	04/10/12	04/10/12	04/10/12	Arch.	4/17/12	4/17/12	N
		1.10	As Noted	Tack Board Color Chart	Newline	04/03/12	04/10/12	04/10/12	04/10/12	Arch.	4/17/12	4/17/12	N
101550 Toilet Compartments													
		1.3 A	As Noted	Product Data	PBJ Spec.	03/27/12	03/27/12	03/27/12	03/30/12	Arch	4/3/12	4/4/12	N
		1.3B	As Noted	Shop Drawings	PBJ Spec.	03/27/12	03/27/12	03/27/12	03/30/12	Arch	4/3/12	4/4/12	N
		1.3C	As Noted	Color Samples	PBJ Spec.	03/27/12	03/27/12	03/27/12	03/30/12	Arch	4/3/12	4/4/12	N
102800 Toilet Accessories													
		1.2A	As Noted	Product Data	PBJ Spec.	03/27/12	03/27/12	03/27/12	03/28/12	Arch	4/17/12	4/17/12	N
104410 Interior Unframed Signs													
		1.3B		Product Data	Nova Graphics								
		1.3C		Shop Drawings	Nova Graphics								
		1.3D		Samples	Nova Graphics								
Division 12:- Furnishings													
122113 Horizontal Louver Blinds													
		1.3A		Product Data	Capitol Blind	03/30/12	04/04/12	04/04/12	04/25/12	Arch			
		1.3B		Shop Drawings	Capitol Blind	03/30/12	04/04/12	04/04/12	04/25/12	Arch			
		1.3C		Color Samples	Capitol Blind	03/30/12	04/04/12	04/04/12	04/25/12	Arch			
Division 22:- Plumbing													
22 05 23 General Duty Valves for Plumbing Piping													
		1.4A		Product Data	Unique Plumb	03/30/12	04/05/12	04/05/12	04/06/12	Eng.	4/10/12	4/10/12	N
22 05 29 Hangers and Supports for Plumbing Piping and Equipment													
		1.5A		Product Data	Unique Plumb	03/30/12	04/05/12	04/05/12	04/06/12	Eng.	4/10/12	4/10/12	N
22 07 19 Plumbing Piping Insulation													
		1.3A		Product Data	Unique Plumb	03/30/12	04/05/12	04/05/12	04/06/12	Eng.	4/10/12	4/10/12	N
		1.3D		Material Test Reports	Unique Plumb	03/30/12	04/05/12	04/05/12	04/06/12	Eng.	4/10/12	4/10/12	N
22 11 16 Domestic Water Piping													



Submittal Log and Schedule - Helms Elementary School



Spec Section		Log of Required Submittals			Subcontractor	Schedule		Submittal Distribution			Disposition of Submittal			
		Total Open Submittals				Date HGI Requested	Date Due	Date Received	Date HGI Sent Out	Engineer / Architect	Date Returned to HGI	Date Returned to Subcontractor	Resubmittal Required	
		Total Submittals in HGI's Office												
Spec Section		Specification Subdivision	Status / Revision	Description	Subcontractor	Date HGI Requested	Date Due	Date Received	Date HGI Sent Out	Engineer / Architect	Date Returned to HGI	Date Returned to Subcontractor	Resubmittal Required	
		1.3A		Product Data	Unique Plumb	03/30/12	04/05/12	04/05/12	04/06/12	Eng.	4/10/12	4/10/12		N
22 11 19 Domestic Water Piping Specialties														
		1.4A	As Noted	Product Data	Unique Plumb	03/30/12	04/05/12	04/05/12	04/06/12	Eng.	4/13/12	4/16/12		N
22 13 16 Sanitary Waste and Vent Piping														
		1.4A		Product Data	Unique Plumb	03/30/12	04/05/12	04/05/12	04/06/12	Eng.	4/10/12	4/10/12		N
22 40 00 Plumbing Fixtures														
		1.4A	As Noted	Product Data	Unique Plumb	03/30/12	04/05/12	04/05/12	04/06/12	Eng.	4/13/12	4/16/12	Y	
22 47 0 Drinking Fountains and Water Coolers														
		1.4A		Product Data	Unique Plumb	03/30/12	04/05/12	04/05/12	04/06/12	Eng.	4/10/12	4/10/12		N
Division 23 - Mechanical														
23 05 18 Escutcheons for HVAC Piping														
		1.3A		Product Data	LMI									
23 05 19 Meters and Gauges for HVAC Piping														
		1.3A		Product Data	LMI									
23 05 23 General Duty Valves for HVAC Piping														
		1.4A		Product Data	LMI									
23 05 29 Hangers and Supports for HVAC Piping & Equipment														
		1.5A		Product Data	LMI									
23 05 53 Identification for HVAC Piping & Equipment														
		1.3A		Product Data	LMI									
		1.3B		Equipment Label Schedule	LMI									
23 05 93 Testing, Adjusting, and Balancing for HVAC														
		1.4A		Qualification Data	LMI									
		1.4B		Contract Documents Examination Report	LMI									
		1.4D		Certified TAB Reports	LMI									
		1.4F		Instrument Calibration Reports	LMI									
23 07 00 HVAC Insulation														
		1.3A		Product Data	LMI									
		1.3C		Material Test Reports	LMI									
23 07 19 HVAC Piping Insulation														
		1.1		Product Data	LMI									
23 09 00 Instrumentation and Control for HVAC														
		1.1A		Product Data - Valve & Damper	LMI	04/20/12	04/20/12	04/20/12	04/24/12	Eng.				
		1.1A-1		Product Data - Motor Starter	LMI	04/20/12	04/20/12	04/20/12	04/24/12	Eng.				
		1.1B		Shop Drawings	LMI									
23 09 01 HVAC Lighting Control Integrated with BAS														
		1.1A		Product Data	LMI									
		1.1B		Shop Drawings	LMI									
23 21 13 Hydronic Piping														
		1.5A		Product Data	LMI									
		1.5B		Shop Drawings	LMI									
		1.5G		Water Analysis	LMI									

Submittal Log and Schedule - Helms Elementary School



Submittal Log and Schedule - Helms Elementary School														
Spec Section		Log of Required Submittals				Schedule		Submittal Distribution			Disposition of Submittal			
		Total Open Submittals												
		Total Submittals in HGI's Office												
Spec Section		Specification Subdivision	Status / Revision	Description	Subcontractor	Date HGI Requested	Date Due	Date Received	Date HGI Sent Out	Engineer / Architect	Date Returned to HGI	Date Returned to Subcontractor	Resubmittal Required	Notes
23 21 23 Hydronic Pumps														
		1.4A	Approved	Product Data	LMI	03/30/12	04/06/12	4-5-12	04/06/12	Eng.	4/10/12	4/10/12	N	
23 31 13 Metal Ducts														
		1.4A	Approved	Product Data	LMI	03/14/12	03/21/12	03/21/12	03/22/12	Eng.	3/27/12	3/29/12	N	
		1.4B		Shop Drawings	LMI									
23 33 00 Air Duct Accessories														
		1.3A	Approved	Product Data	LMI	03/14/12	03/21/12	03/21/12	03/22/12	Eng.	3/27/12	3/29/12	N	
		1.3B		Shop Drawings	LMI									
23 34 23 Power Ventilators														
		1.4A		Product Data	LMI									
23 37 13 Diffusers, Registers, & Grilles														
		1.3A	Approved	Product Data	LMI	03/14/12	03/21/12	03/21/12	03/22/12	Eng.	3/27/12	3/29/12	N	
23 41 00 Particulate Air Filtration														
		1.3A		Product Data	LMI									
23 62 00 Packaged Compressor and Condenser Units														
		1.3A		Product Data	LMI									
		1.3B		Shop Drawings	LMI									
23 73 14 Modular Outdoor Central Station Air-Handling Units														
		1.3A		Product Data	LMI									
23 74 33 Packaged Outdoor Heating and Cooling Make-up Air Conditioners														
		1.4A	R&R	Product Data	LMI	03/14/12	03/29/12	03/30/12	03/30/12	Eng.	3/30/12	4/2/12	Y	
		1.4B		Shop Drawings	LMI									
23 82 19 Fan Coil Units														
		1.4A	As Noted	Product Data	LMI	03/14/12	03/29/12	03/29/12	03/29/12	Eng.	4/10/12	4/10/12	Y	
		1.4A R1		Product Data	LMI	04/20/12	04/20/12	04/20/12	04/24/12	Eng.				
		1.4B	As Noted	Shop Drawings	LMI	03/14/12	03/29/12	03/29/12	03/29/12	Eng.	4/10/12	4/10/12	Y	
		1.4B R1		Shop Drawings	LMI	04/20/12	04/20/12	04/20/12	04/24/12	Eng.				
		1.4C		Color Samples	LMI									
23 82 23 Unit Ventilators														
		1.4A	Approved	Product Data	LMI	03/14/12	03/29/12	03/29/12	03/29/12	Eng.	3/30/12	3/30/12	N	
		1.4B		Shop Drawings	LMI	03/14/12	03/29/12	03/29/12	03/29/12	Eng.	3/30/12	3/30/12	N	
Division 26 Electrical														
260200 Basic Materials & Methods														
		1.07C		Shop Drawings	State Wide Elec									
		1.07D		Product Data	State Wide Elec									
260300 Electrical Demolition Work														
		3.01F		Salvage List	State Wide Elec									
260500 Common Work Results for Electrical														
		1.4A		Product Data - Sleeve Seals	State Wide Elec									
26 05 63 Identification for Electrical Systems														
		1.2A		Product Data	State Wide Elec									
26 05 19 Low Voltage Electrical Power Conductors and Cables														

Submittal Log and Schedule - Helms Elementary School



		Log of Required Submittals				Schedule	Submittal Distribution	Disposition of Submittal
		Total Open Submittals						
		Total Submittals in HGI's Office						

Spec Section		Specification Subdivision	Status / Revision	Description	Subcontractor	Date HGI Requested	Date Due	Date Received	Date HGI Sent Out	Engineer / Architect	Date Returned to HGI	Date Returned to Subcontractor	Resubmittal Required	Notes
		1.4A		Product Data	State Wide Elec									
		1.4B		Qualification Data: for testing agency	State Wide Elec									
		1.4C		Field Quality -Control test reports	State Wide Elec									
26 05 26 Grounding & Bonding for Electrical Systems														
		1.3A		Product Data	State Wide Elec									
		1.3B		Qualification Data	State Wide Elec									
		1.3C		Field Quality Control test reports	State Wide Elec									
		1.3D		O&M Data - Close Outs	State Wide Elec									
26 05 29 Hangers & Supports for Electrical Systems														
		1.5A		Product Data	State Wide Elec									
26 05 33 Raceway & Boxes for Electrical Systems														
		1.4A		Product Data	State Wide Elec									
		1.4B		Shop Drawings	State Wide Elec									
26 09 24 Electrical Lighting Control Integrated with BAS														
		1.1E		Shop Drawings	State Wide Elec									
26 24 16 Panel boards														
		1.5A		Product Data	State Wide Elec	04/05/12	04/05/12	04/20/12	04/25/12	Eng.				
		1.5B		Qualification Data	State Wide Elec									
		1.5C		Field Quality Control Reports	State Wide Elec									
		1.5D		Panel board Schedules	State Wide Elec	04/05/12	04/05/12	04/20/12	04/25/12	Eng.				
		1.5E		O&M Data - Close Outs	State Wide Elec									
26 27 26 Wiring Devices														
		1.4A		Product Data	State Wide Elec									
		1.4B		Shop Drawings	State Wide Elec									
		1.4C		Samples	State Wide Elec									
		1.4D		Field Quality Control Reports	State Wide Elec									
		1.4E		O&M Data - Close Outs	State Wide Elec									
26 28 16 Enclosed Switches & Circuit Breakers														
		1.5A		Product Data	State Wide Elec									
		1.5B		Field Quality Control Reports	State Wide Elec									
		1.5C		Manufacturers Field Service Report	State Wide Elec									
		1.5D		O&M Manuals - Closeout	State Wide Elec									
26 29 23 Variable Frequency Motor Controllers - Installation														
		1.8A		Training Sign in Sheet	State Wide Elec									
26 51 00 Interior Lighting														
		1.3A	R&R	Product Data	State Wide Elec	04/06/12	04/06/12	04/06/12	04/09/12	Eng.	4/10/12	4/10/12	Y	
		1.3B	R&R	Installation Instructions	State Wide Elec	04/06/12	04/06/12	04/06/12	04/09/12	Eng.	4/10/12	4/10/12	Y	
		1.3C	R&R	Qualification Data	State Wide Elec	04/06/12	04/06/12	04/06/12	04/09/12	Eng.	4/10/12	4/10/12	Y	
		1.3D	R&R	Product Certificates	State Wide Elec	04/06/12	04/06/12	04/06/12	04/09/12	Eng.	4/10/12	4/10/12	Y	
		1.3E	R&R	Field Quality Control Reports	State Wide Elec	04/06/12	04/06/12	04/06/12	04/09/12	Eng.	4/10/12	4/10/12	Y	
		1.3F		O&M Manuals - Closeout	State Wide Elec									
26 56 00 Exterior Lighting														
		1.5A	R&R	Product Data	State Wide Elec	04/06/12	04/06/12	04/06/12	04/09/12	Eng.	4/10/12	4/10/12	Y	

Submittal Log and Schedule - Helms Elementary School



		Log of Required Submittals				Schedule		Submittal Distribution			Disposition of Submittal			
		Total Open Submittals												
		Total Submittals in HGI's Office												
Spec Section		Specification Subdivision	Status / Revision	Description	Subcontractor	Date HGI Requested	Date Due	Date Received	Date HGI Sent Out	Engineer / Architect	Date Returned to HGI	Date Returned to Subcontractor	Resubmittal Required	
		1.5E	R&R	Qualification Data	State Wide Elec	04/06/12	04/06/12	04/06/12	04/09/12	Eng.	4/10/12	4/10/12	Y	
		1.5F	R&R	Field Quality Reports	State Wide Elec	04/06/12	04/06/12	04/06/12	04/09/12	Eng.	4/10/12	4/10/12	Y	
		1.5G		O&M Manuals - Closeout	State Wide Elec									
		1.5H		Warranty - Sample of special warranty	State Wide Elec									
Division 27 - Communications														
27 51 00 Intercom														
		1.1		Product Data - Shop Drawings	AFS									
Division 28 - Electronic Safety And Security														
28 31 11 Digital Addressable Fire Alarm System														
		1.4A		Product Data	AFS									
		1.4B		Shop Drawings	AFS									
		1.4C		Suppliers Qualifications	AFS									
		1.4D		Hourly Service Rate Schedule	AFS									
		1.4E		O&M Manuals - Close Out	AFS									
		1.4F		Warranty - Close Out	AFS									