

Milby High School



Key Facts

Budget: \$68,810,000

Project Type: New school

District: District III, Manuel Rodriguez Jr.

Location: 1601 Broadway

Overview


Milby High School opened in 1926, replacing the former Harrisburg High School (1911 – 1926), which was located several blocks south. Over the years, the school has seen numerous additions, but all have preserved the school's distinctive historic features. In 2012, Houston voters approved the construction of a new school for up to 2,000 students that preserves the architecturally significant building structure.

In the months since the bond passed, Milby's Project Advisory Team has been working with its architects and HISD planners to design a new school that also includes major renovations to historic portions of the building. The goal is to create a 21st century facility that will serve generations of students to come, while building on the school's history and traditions.

Project Highlights

- ✓ 280,000-square-foot, 3-story building on a 19-acre site
- ✓ The design preserves the architecturally significant building while providing a 21st century learning environment
- ✓ 42 Core Learning Centers
- ✓ 14 science learning centers/wet labs
- ✓ The historic core becomes the center of school life, housing the learning and dining commons
- ✓ The main academic spaces wrap around the central courtyard
- ✓ The central courtyard is programmed space with outdoor learning areas, eating areas and performance spaces
- ✓ The campus is organized into four distinct neighborhoods
- ✓ Each neighborhood has community access points on the ground floor
- ✓ Each neighborhood includes extended learning areas for students to work and study independently or in groups
- ✓ The building includes a new auditorium and athletic facilities

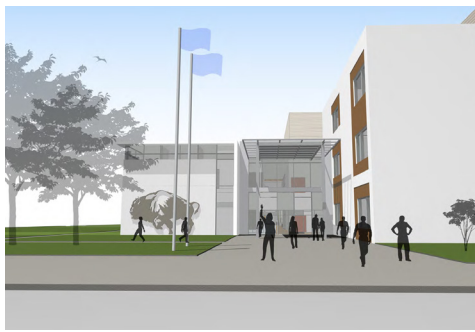
Information

INDICATOR	ID	PROJECT/SCHOOL/FACILITY	BUDGET
	C-011	MILBY HIGH SCHOOL	\$68,810,000
	PLANNING/DESIGN START		CONSTRUCTION START
	EARLY/MID 2013		MID/LATE 2014
	PHASE		% OF PHASE (AS OF MARCH 31, 2014)
	SCHEMATIC DESIGN		95%
PROJECT TEAM			
HISD MANAGER		CHRIS KOEPER	
ARCHITECT		KIRKSEY	
CONTRACTOR		TELLEPSEN BUILDERS, LP	
PROGRAM MANAGER		HEERY INTERNATIONAL, INC.	

Houston Independent School District • 4400 West 18th Street • Houston, Texas 77092-8501
www.HoustonISD.org • www.facebook.com/HoustonISD • www.twitter.com/HoustonISD



Aerial Perspective



Entry Perspective



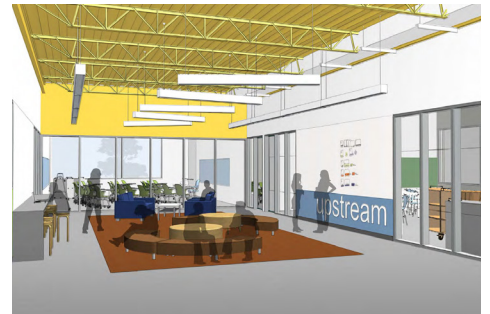
Courtyard Perspective



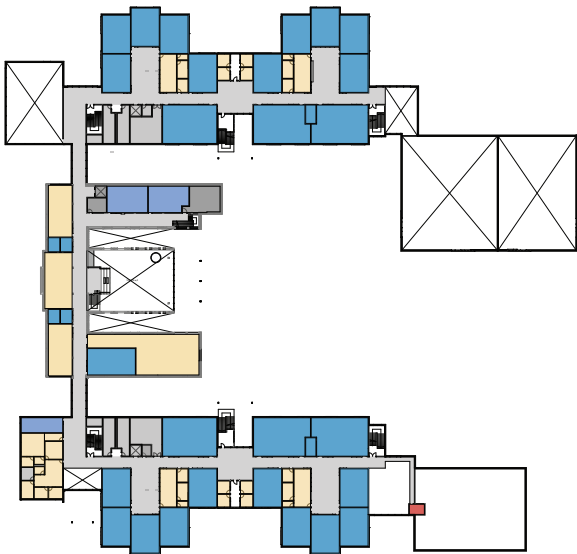
Corridor Perspective



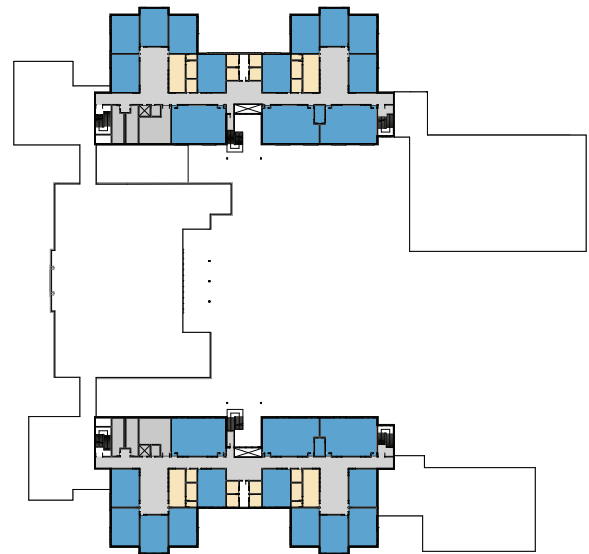
Student Union Perspective



Neighborhood Perspective



Second Floor Plan



Third Floor Plan



First Floor Plan

- Administration
- Food Services
- Learning Commons
- Learning Neighborhoods
- Performing and Fine Arts
- Career Technical Education
- Athletics
- Building Support
- Circulation



Aerial Perspective

Milby High School