



HOUSTON INDEPENDENT SCHOOL DISTRICT

Hattie Mae White Educational Support Center
4400 West 18th Street • Houston, Texas 77092-8501

Richard A. Carranza
HISD Superintendent of Schools

www.HoustonISD.org
www.twitter.com/HoustonISD

Dear HISD supporter,

The 85th Texas Legislature is convening in Austin, and HISD's top priority this legislative session is addressing the harmful effects of an outdated school finance system. We hope you will support our district as we ask state lawmakers to make changes that will keep local tax dollars in local schools.

Under the state's current school finance system, HISD is considered "property wealthy" and is subject to sending \$162 million in local property taxes to the state – a process known as "recapture." But on Election Day, Houstonians voted down the ballot measure that would have authorized the \$162 million payment and future payments totaling more than \$1 billion. **This means that, starting in July, the Texas Education Agency will detach \$18 billion worth of nonresidential, commercial property from HISD's tax rolls and reassign those businesses to other school districts for taxing purposes. The TEA will continue to detach property every July for the foreseeable future.**

So, what can be done?

HISD's Board of Education urges the Legislature to stop the detachment and reassignment of commercial property in Houston before June. And, overall, the state must reduce its over-reliance on local property tax dollars to fund public education statewide and replace those local tax dollars with state funds.

Simply put, we need more of our local dollars to stay in our local schools.

Specifically, HISD's legislative agenda outlines steps on how to proceed, including:

- Increasing the state-set "wealth" level, otherwise known as the basic allotment, which reduces recapture;
- Reducing the tax penalty to local homeowners by recognizing half of the local homestead exemption dollars in the school funding formula, resulting in about \$60 million in recapture savings;
- Counting full-day pre-K students in recapture calculations, resulting in \$39 million in recapture savings; and
- Allowing districts paying recapture to receive state transportation funding, resulting in roughly \$12 million in revenue for HISD.

Combining these four suggestions helps HISD and provides meaningful financial relief for many school districts throughout the state.

Recapture allows the Legislature to use local property tax dollars to subsidize the state's contribution to public education – despite the state's constitutional obligation to fund schools. **When local property values rise, property-wealthy school districts send more of their**



local tax dollars to the state, which allows the state to spend more of its money on non-educational budget items.

Our kids deserve better.

We hope you will support us as we ask lawmakers to consider our agenda and make changes that will keep local dollars in local schools. If you would like to voice an opinion about school finance, visit HoustonISD.org/Recapture to learn more and find out who represents you in the Texas Legislature. The attached FAQ will also help answer any questions you may have. Thank you for your continued support of Houston public schools.

Sincerely,

A handwritten signature in blue ink, which appears to read "Richard Carranza". The signature is stylized and fluid.

Richard A. Carranza
HISD Superintendent of Schools

HISD voters rejected Proposition 1 on the November ballot. What is Proposition 1 and what does the vote mean for HISD?

HISD is subject to sending an estimated \$162 million in local property tax dollars to the state in 2016-2017 under a process called “recapture.” HISD’s Board of Education was required by state law to hold an election in November 2016 asking voters to approve or reject “purchasing attendance credits,” which is a method of paying recapture and sending the \$162 million to the state. Voters rejected Proposition 1 by 62% to 37%, so HISD is now subject to detachment of about \$18 billion worth of nonresidential, commercial property next July.

What does detachment mean?

The Commissioner of Education will remove \$18 billion worth of the most valuable non-residential, commercial properties from HISD’s tax roll – starting with the most valuable – and reassign (or annex) those properties to other school districts for taxing purposes. The reassigned properties would be taxed at different tax rates from buildings nearby and would likely pay a higher tax rate than they were paying to HISD.

Has a school district ever had property detached under Chapter 41 before?

No, this has never happened before.

Is there any other solution?

The Legislature convenes in January 2017 and could make changes to the school finance system to lessen or avert the impact of the recapture payment. If the Legislature does not act, the Commissioner of Education will detach properties effective July 1, 2017.

How did we get here? Why is HISD subject to recapture?

Under the state’s funding structure, HISD is considered “property-wealthy” and is subject to a “recapture” payment to the state under Chapter 41 of the Texas Education Code, commonly known as the “Robin Hood” plan. It was passed by the Legislature in 1993 in an attempt to equalize disparities between property-wealthy and property-poor districts. Under the law, the state receives local revenue from property-wealthy districts with revenue that exceeds a state-set level and redistributes those funds to pay for public education — a process known as “recapture.” Though nearly 80 percent of HISD students come from low-income families and a third are learning to speak English, rising property values in Houston and an outdated school finance system caused HISD in 2016 to go into recapture. See a previous FAQ on recapture [here](#).

What is the HISD Board of Education’s recommendation on how to proceed?

The Board of Education urges the Legislature to stop the detachment and reassignment of commercial property in Houston before June and, overall, reduce its over-reliance on local property tax dollars to fund public education statewide and replace those local tax dollars with state funds. Specifically, HISD’s legislative agenda outlines steps on how to proceed, including:

- Increasing the state-set “wealth” level, otherwise known as the basic allotment, which reduces recapture;
- Reducing the tax penalty to local homeowners by recognizing half of the local homestead exemption dollars in the school funding formula, resulting in about \$60 million in recapture savings;

- Counting full-day pre-K students in recapture calculations, resulting in \$39 million in recapture savings; and
- Allowing districts paying recapture to receive state transportation funding, resulting in roughly \$12 million in revenue for HISD.

If the Legislature does not act and detachment moves forward, will my taxes increase?

Whether commercial property is detached or not, a tax increase is a possibility. The district still needs to keep teacher pay competitive and pay for fixed cost increases. Recapture takes away those resources, so tax increases could be possible to meet financial needs of the district for both debt and general operations.

How can I make my opinion about this subject known?

If you would like to voice an opinion about recapture and school finance, reach out to your state legislator. Visit HoustonISD.org/Recapture for a list of state representatives and contact information, and for more information about recapture and HISD.



Join us for Fiesta Night
4840 Beechnut
Meyerland Plaza

Tuesday, January 24, 2017
Dine in or Carry Out
Anytime 5:00 p.m. to 10:00 p.m.

Bring this flyer and Los Tios will donate 20% of total receipts to Parker Elementary.

Bring your friends and neighbors for Fiesta Night at Los Tios.

Martial Arts

After School

Teaches Life Lessons

Anti-bullying Program

How to stand up for yourself

Builds Self-esteem

Discipline

Respect

Master Williams's passion is in teaching Traditional Martial Arts, but he also hopes to help support the job you do as a

Parent!!

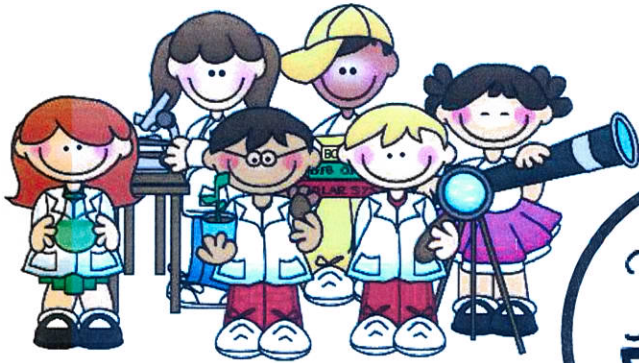
*** One of your privileges of being a student of Master Williams is that you can also train at his Dojang at no extra Charge!!!

Classes are on Wednesdays 4:00pm till 5:00pm (on campus)

Ron Williams for more info. 281-983-9901

Parker's Enrichment Clubs present

FALL SHOWCASE



Did you miss your chance to join the Enrichment Clubs?

Want to know more about what we are doing? Join us for a FREE fun-filled afternoon to check out what our Enrichment Clubs have to offer!



JANUARY 20TH
4:30 – 6:00PM

PARKER ELEMENTARY FRONT LAWN

CONCESSIONS

**SUPPORT THE CHOIR AND
FEED YOUR FAMILY.**



CHESS & BRAINY
GAMES CLUB
CHALLENGE US TO A
FRIENDLY GAME



MATH & SCIENCE
CLUB
!!!! GAMES!!!!!!



ART CLUB
ART EXPO AND CRAFT



PERFORMANCES
THEATER CLUB &
ODYSSEY OF THE MIND



ROBOTICS TEAMS
COMPETITION



SPORTS & STATS
CLUB

FANTASY FOOTBALL
Q&A

SAVE THE DATE

Parker Elementary 2017

Free Enrichment Clubs

Spring sign-up for clubs is here. Please read the information below and mark your calendars.

All Clubs are from 3:45 – 4:45 p.m.

Registration

Please visit our PTO website for instructions on registration. Click on the Enrichment Clubs tab in the Quick Links panel.

<http://www.CynthiaAnnParkerPTO.org>

Important Dates

PTO meeting Thursday, **January 12th @ 6:30 pm.**

Registration begins Friday, **January 20th @ 6a.m.**

After School Care- clubs registration deadline, **January 30th**

Clubs will begin the week of **February 13th**

Spring Showcase, **April 28th**

If you have any questions, please email me. CrisaVDB@gmail.com



Art Club

Students will engage in activities that are fun, as well as educational. In Art Club, they will have the opportunity to explore different components of art while they create their own masterpieces.

Wednesday- Coach Wilson (3rd -5th)
Coach Pittman (K-2nd)



Chess Club

This club will be for students who are interested in learning the fundamentals of chess, hone their skills and want to practice with friends. This year in chess club we would like to prepare our Chess club members for an in-house competition.

Monday - Coach Wilson (3rd -5th)



Earth Club

Come learn about different ways we can take care of our Earth through reading and fun science activities. Students will be able to use their knowledge to take action towards helping the Earth.

Thursday - Coach Pittman (1st - 5th)



Math Club

Parker will be partnering with Bedtime Math to bring Crazy 8 math clubs to campus. Every week Crazy 8ers build stuff, run and jump, make music, and make a mess, while bonding with new friends over math.

Monday - Coach Terry (2nd -5th)
Thursday - Coach Jordan (K-2nd)



Robotics Club

With the help from NASA and LEGOS students will work in groups to build robots, complete missions and participate in competitions.

Wednesday - Coach Herce (3rd -5th)
Coach Reed (3rd -5th) &
Coach Van Den Bossche (3rd -5th)



Science Club

Students will have an opportunity to build levels of scientific and mathematical literacy through hands-on investigations.

Monday - Coach Kolb (K-2nd) & Quiocho (3rd-5th)
Tuesday - Coach Hoyt (K-2nd)
Thursday - Coach Turner (3rd-5th)



Sports and Stats

After school fantasy football and basketball club! Playing fantasy sports is a great way to learn how to read and interpret statistics and make predictions and decisions based on those interpretations. Students will also practice good sportsmanship and team building.

Thursday - Coach Kabay (4th-5th)



Theater Club

Students will take center stage as they participate in the components of producing a play all while improving their focus, confidence and social skills. Reader's theater, acting exercises, prop design and maybe even a matinee for Parker!

Monday - Coach Turner (3rd -5th)
Tuesday - Coach Britton (K-2nd)



Brainy Games Club

Children will play a variety of games while learning cooperation, sportsmanship and innovative thinking.

Thursday - Coach Ellery (K-2nd)

HOME OF THE 1966 LITTLE LEAGUE WORLD CHAMPIONS



WESTBURY
LITTLE LEAGUE



2017 SPRING REGISTRATION **SIGN UP TODAY**

www.WESTBURYLL.org
OR

IN PERSON DATES/TIMES/LOCATIONS

Wednesday, January 11th, 18th 6:30 – 8:30 p.m.

Sunday January 15th, 22th 1:00 – 3:00 p.m.

Westbury Little League

Concession Stand

5300 Dryad, Houston, Texas 77035

REGISTRATION FEES

Boys and Girls Age Groups

Ages 4-5 years old \$200.00 per player

Ages 6-12 years old \$250.00 per player

Visit www.westburyll.org to verify Little League age

Early registration discount until November 30!

Sibling discount available

RULE CHANGE

The Little League National Organization has changed its rules so children that go to school together can play together. So if your child is in a school in our boundaries regardless of whether they live here, they can play with their friends at Westbury Little League. If you have questions email us!



FOLLOW US

For more information, please email



registration@westburyll.com or call (713)723-1701

Online Registration: www.westburyll.org