

# HISD STUDENT CONTINUUM OF CARE

HISD’s continuum of care model reimagines how we serve and support all students. We recognize that every student deserves a best-in-class education, and providing comprehensive support will help them to become active members of the community, better preparing them for 2035 and beyond.

## REIMAGINING COMPREHENSIVE SERVICES FOR THE WHOLE STUDENT

HISD departments and campuses are working together differently to better serve our students, creating stronger systems of support across the District.

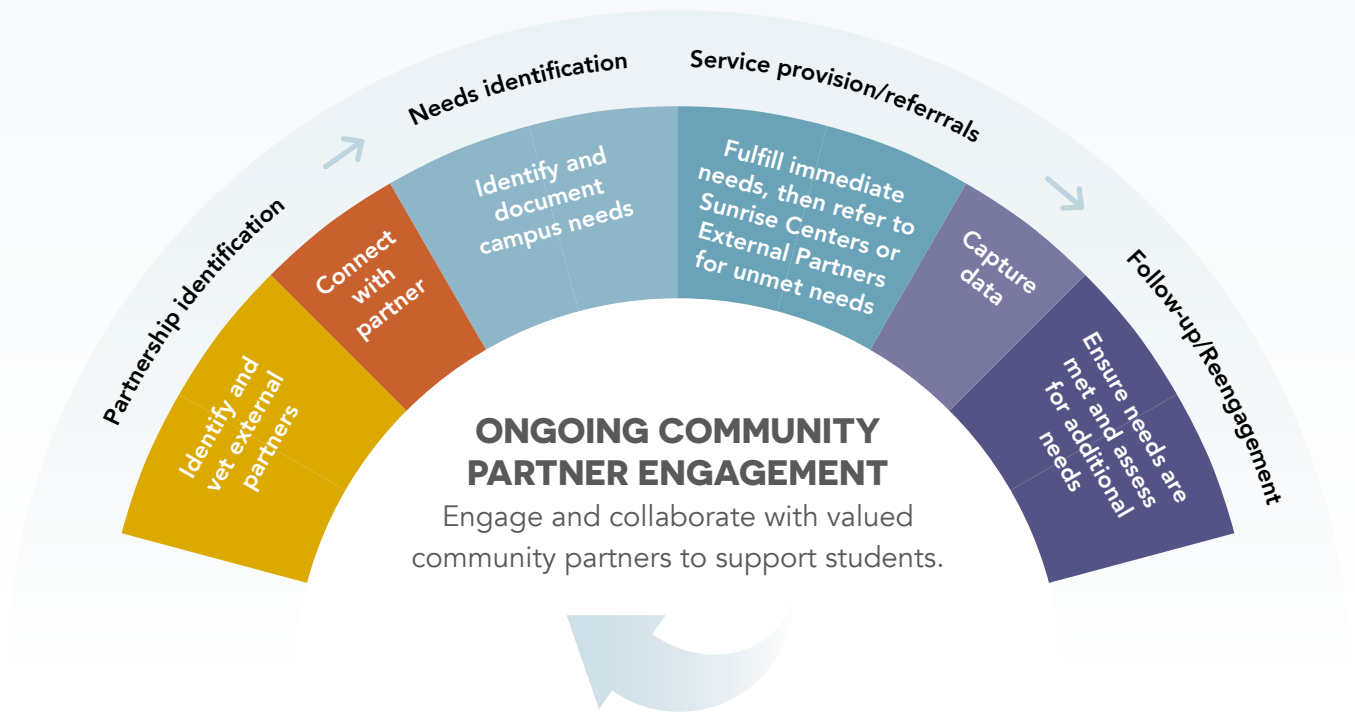
- 

**Step 1**  
Identify student needs
- 

**Step 2**  
Meet immediate needs
- 

**Step 3**  
Plan to address long-term or unmet needs
- 

**Step 4**  
Continue to follow up and assess student needs



## SUPPORTING THE WHOLE STUDENT

Backed by comprehensive District services and support as well as key community partners, HISD supports families in need of access to basic services, general and mental healthcare, enrichment support, and more.

### BASIC NEEDS

- Food
- Clothing
- School supplies

### COMPREHENSIVE CARE

- Mental healthcare
- Immunizations
- Telehealth services

### ENRICHMENT

- Extracurricular activities
- Mentor programs
- Tutoring

### LEGAL AND CRISIS

- Immigration support
- Legal services
- Homelessness and foster care support

STUDENTS IN NEED MAY FILL OUT THE SAF FORM AT [HISD.MY.SITE.COM/SAF](https://www.hisd.org/my-site.com/saf)  
PLEASE CONTACT [EXTERNALENGAGEMENT@HOUSTONISD.ORG](mailto:EXTERNALENGAGEMENT@HOUSTONISD.ORG) FOR MORE INFORMATION.